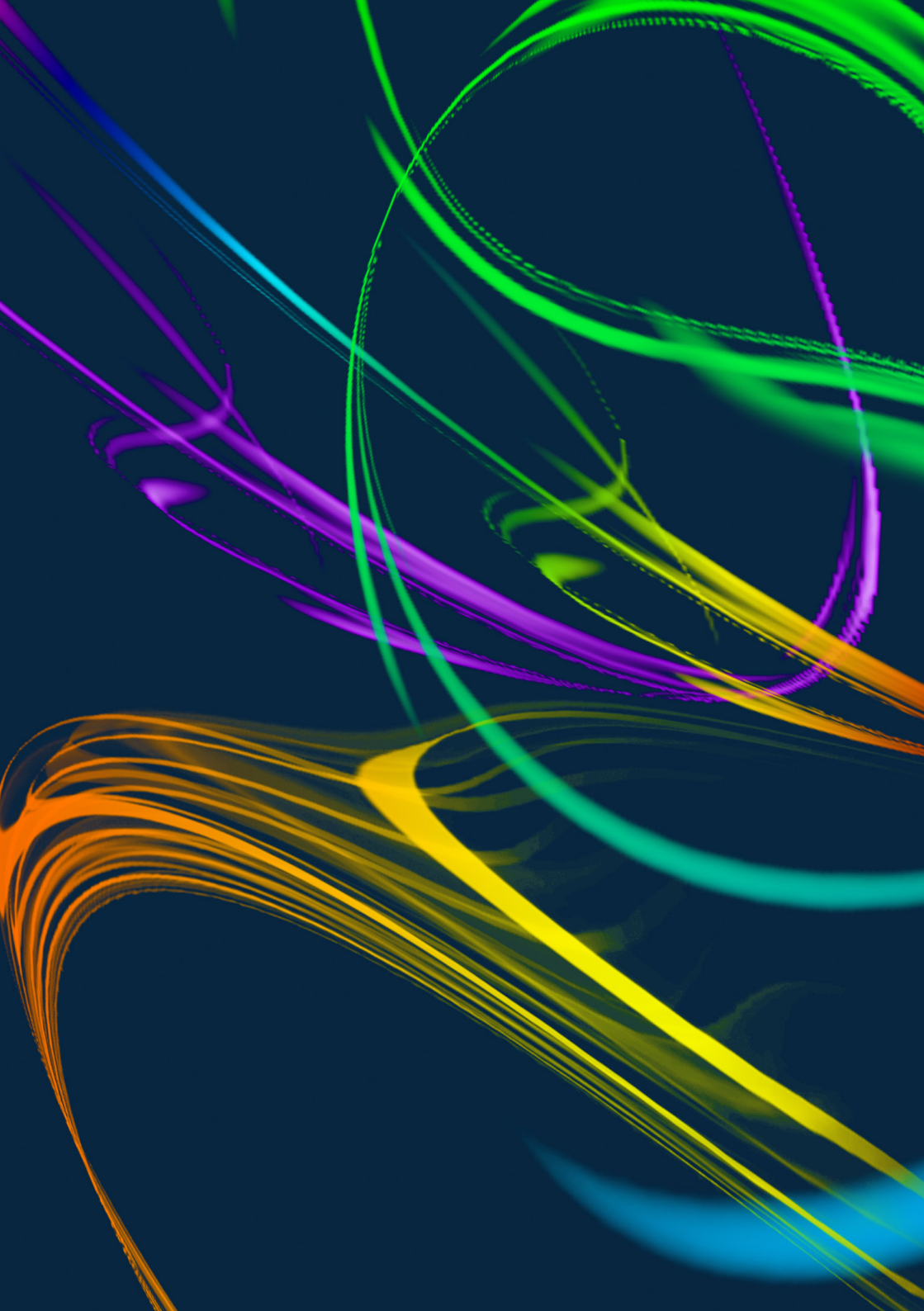




soundSation

Feel the Sound

Audio & Lighting




soundSation
Feel the Sound

pro lighting

• No matter small gigs or large venues, in today's events the visual component is a key to create a really outstanding and unforgettable shows. With the right lighting equipment you can create patterns which magnify your music, involving your audience and dramatically improve your show experience.

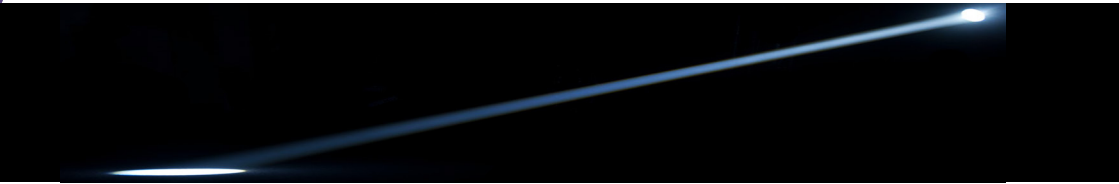
• So far the halogen lamps has been the most popular, but they have several downsides. First they are consuming a lot of energy. Second they need to be replaced from time to time. Third they produce a lot of heating. Recently the introduction of LED innovative technology significantly improved performances and sharply reduced electrical consumption and heating. LED bars and pars are becoming more and more affordable.

• At SoundSation we believe that every band can have their own equipment to make their events unforgettable and we proudly introduce our full range LED lighting products.

INDEX

Beam Moving Head	4
Wash Moving Head	6
Spot Moving Head	10
Strobe Moving Head	11
LED Pars.....	12
LED Kits.....	16
Mini Spots & Beams.....	18
Lasers & Scanners.....	20
Lighting FX.....	21
LED Bars.....	24
DMX Controllers.....	26
Smoke & FX Machines.....	28
Hanging Tools.....	32
Fluids.....	34
Stands.....	35

Moving Heads



MHL300

300 watt Beam Moving Head

» MHL-300 is high-performance moving head with superior lamp Brightness. Best installed in dance large clubs where very powerful beams are essentials to the scene. The 12 Channels DMX allow to control all the built-in function. Master-slave, Auto and Sound Controlled modes are also available onboard.

- » Powerful 300 watt discharge lamp
- » Over 850 hours of lamp lifecycle
- » Control mode : DMX512, Master-slave,Auto,Sound
- » Projection type : beam
- » Color mixing : analog
- » Pan Tilt : 540°•270°16 bit with electronic correction
- » Strobe flash rate: 13f-s with Free Strobe and Pulse functions
- » Color wheel : 8 colors plus white, single rotation - rainbow effect, full-color hal-color
- » Gobo wheel : 8 gobos plus white; double rotation rainbow effect
- » Onboard Display LCD user interface
- » DMX 512 compliant 12 CH•
- » Atomizing effect linear dimmer : 0-100•

MHL200

200 watt Beam Moving Head

» MHL-200 is high-performance moving head with superior lamp Brightness. Best installed in dance large clubs where very powerful beams are essentials to the scene. The 12 Channels DMX allow to control all the built-in function. Master-slave, Auto and Sound Controlled modes are also available onboard. Equipped with a 5R PHILIPS Lamp.

- » Powerful 200 watt discharge 5R PHILIPS lamp
- » Projection type : beam
- » High speed rotating 8-facet prism rotating in both directions at different speed
- » Color system: One color wheel with fourteen kinds of different color diachronic filters plus white
- » Seventeen interchangeable gobos plus white, with high speed gobo rotation effect
- » Onboard Display LCD user interface
- » Comes in a set of 2 mobile heads MHL-200 and a rugged 4 wheel Flight Case with accessories compartment
- » Control mode : DMX512 16CH, Master-slave,Auto,Sound
- » Strobe flash rate: 15f•s
- » Pan•Tilt : 530°•280°•
- » Mechanical multi-step Focus with three different angles (15 degree, 18 degree and 22 degree)- DMX control
- » Shutter Mechanical (non step can be adjusted) shutter are suitable for different line angles
- » Effects: Seven big prism gobos; preprogrammed and changing Shutter Pulse Effect



MHLB2

Beam moving head 2R lamp

» MHL-B2 is high-performance moving head with superior lamp Brightness. Best installed in medium size clubs where powerful beams are essentials to the scene. The 16 Channels DMX allow to control all the built-in function. Master-slave, Auto and Sound Controlled modes are also available onboard. Equipped with a 5R PHILIPS Lamp.

- » Powerful 132 watt discharge 2R Lamp
- » Projection type : Beam
- » High speed rotating 8-facet prism with Atomization effect
- » Color wheel: one color wheel, 13 plugged colors plus white, with half color and rainbow effect
- » Gobo wheel: one gobo wheel, 14 plugged gobos plus white, with high speed gobo rotation effect
- » Onboard Display LCD user interface
- » Control mode : DMX512 16CH, Master-slave,Auto,Sound
- » Strobe flash rate: 15f•s
- » Pan•Tilt : 530°•270°•
- » Focus: electronic liner focus at 0-3.8



MHL-10W-12

LED Beam 12 pcs moving head - 10W cree lamp 4in1

» MHL-10W-12-4in1 is a latest technology fixture equipped with 12 ultrabright CREE LED. This USA maker of LEDs is worldwide know to produce uniform,intense, bright LED sources The mobile head has an ultracompact design and offer superior performance compared to many bigger is sizes products on the market.The 15 Channels DMX allow a pro DMX control all the built-in rich functions . Best for all showset.

- » 12 high brightness 10W QuadCromo LED
- » Over 100000 hours of LED life
- » Projection type : wash
- » Color Technology : RGBW QuadCromo
- » Control mode : DMX512, Master-slave,Auto,Sound
- » User interface with Display LCD
- » DMX 512 compliant 15 CH
- » Linear dimmer 0-100•
- » Strobe flash rate: 1-13f•s
- » Pan: 540°•
- » Tilt: 270°•
- » Tilt•Pan Silent mode rotation
- » Beam angle: 4°•
- » High precision and speed microcontrolled rotation System



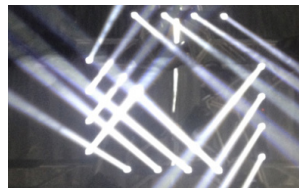
Mini Moving Heads

MHL-MINI-BEAM

LED Beam Mobile Head Mini Beam

» MHL-MINI-BEAM is small compact moving head with superior beam LED brightness. Its rotations and movements are very speedy and it is best installed in small size clubs and show apps where powerful beams are essentials to the scene, but portable equipment is the only choice. The 13CH Channels DMX allow to control all the built-in function. Master/slave, Auto and Sound Controlled modes are also available onboard.

- » Powerful 10W LED QuadCromo
- » Projection type : Beam
- » Color System: RGBW
- » Beam Angle: 6°
- » Dimmer: 0-100% Adjusting Electronic Dimmer
- » Strobe: 1-10t-s
- » Control mode : DMX512 11-13CH, Master/slave,Auto,Sound
- » Onboard Display LCD user interface
- » Pan/Tilt : 540°/270°

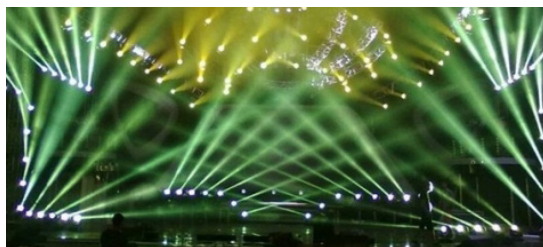


MHL-MINI-BEAM-W

LED Beam Mobile Head Mini White Beam

» MHL-MINI-BEAM is small compact moving head with superior beam white LED brightness. Its rotations and movements are very speedy and it is best installed in big numbers in all show ambience. The white beam color is extremely intense and concentric. The 10CH Channels DMX allow to control all the built-in function. Master/slave, Auto and Sound Controlled modes are also available onboard.

- » Powerful 25W Ultrabright LED
- » Projection type : Beam
- » Beam Color: White
- » Beam Angle: 1.8°
- » Dimmer: 0-100% Adjusting Electronic Dimmer
- » Strobe: 1-10t-s
- » Control mode : DMX512 10 CH, Master/slave,Auto,Sound
- » Onboard Display LCD user interface
- » Pan/Tilt : 540°/220°



Motorized Beams

» Targeting the showlighting professionals panorama, SOUNDATION introduces a new high emission motorized LED BEAM device. The system is based on 5 high power LED sources with Quadcromo technology (they are natively able to reproduce each of the 4 color R G B W). BEAM-ARC5 design concept is a 180° rotative system through a moving bar incorporating the LED sources. Syscontrol can be obtained directly by onboard console & LCD Display or remotely by DMX512 protocol with 12CH or 17CH selectable control mode. All modern standard functions can be controlled like dimmer, tilt, Strobe, Chase and others. Automode, Master/slave, DMX, Sound activation with adjustable sensibility are available.

Beam Arc 5-32W

Motorized Beam LED BAR 32W 5

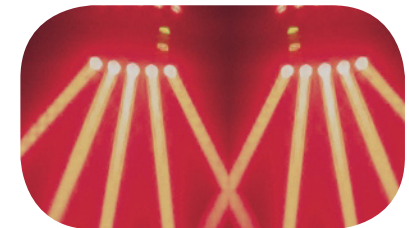
- » Motorized BEAM system
- » 5 extremely powerful 32W LED sources
- » Quadcromo technology (RGBW)
- » 12CH • 17CH switchable DMX control mode
- » LCD Display
- » Function modes : Auto, Master/Slave,DMX,Sound
- » Adjustable Sound Mode sensitivity
- » Tilt/rotation : 180°
- » Strobe, Dimmer, Tilt, Chase functions
- » IN/OUT Power Chain



Beam-Arc 5-10W

Motorized Beam LED BAR 10W 5

- » Motorized BEAM system
- » 5 extremely powerful 10W LED sources
- » Quadcromo technology (RGBW)
- » 12CH • 17CH switchable DMX control mode
- » LCD Display
- » Function modes : Auto, Master/Slave,DMX,Sound
- » Adjustable Sound Mode sensitivity
- » Tilt/rotation : 180°
- » Strobe, Dimmer, Tilt, Chase functions
- » IN/OUT Power Chain

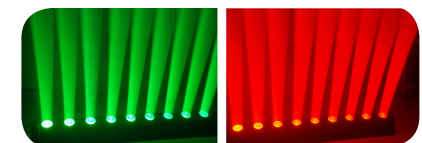


Beam-988-10W-6

Moving LED BEAM BAR with 6 RGBW 10W LED lamps

» New designed this LED Beam bar with powerful 10W Led lamps. It give audience fresh beam feelings, dramatically and vividly. Highly proposed in application of live mid event, disco bar, gallery and wall. It is frequently used on stage as backlight powerful scene light source.

- » 6 powerful Quadcromo 10w LED RGBW (4in1)
- » Color mixing: RGB
- » DMX512 12-18 channel control mode
- » Control mode: DMX,Master/Slave, Auto, manuale, sound activated
- » Linear dimmer: 0-100%
- » Strobe Flash: 1-13t-s
- » Tilt: 180° (8 - 16 bit)
- » Light beam angel: 2°
- » IP rate: IP33



Wash Moving Heads

MHL-10W-12-DOUBLE

LED Wash moving double head light 12 pcs 10w (6X2) RGBW

» MHL-10W-12-DOUBLE is a latest technology fixture with superior LED Brightness and a new double face design tracing innovative lighting movements and draws impossible to achieve with traditional one-side emission mobile heads. The ultra-compact design allows to reach the same brightness of traditional Moving Heads weighting only 8 Kilograms . The 15 Channels DMX allow to control all the built-in function evei if Master/slave, Auto and Sound Controlled modes are onboard.

- » Double Head Projection System
- » Projection: Wash
- » 12 High-brightness QuadCromo LED RGBW (6 pcs each face)
- » DMX control 15 channels
- » Beam angle: 25°
- » Strobe Flash: 1-13t-s
- » Linear Dimmer: 0-100%
- » Control Mode: DMX512, Auto, Master/slave, Sound



MHL-12W-36Z- RGBW

LED Wash RGBWAV 36 pcs 12W Moving Head Light ZOOM

» MHL-12W-36Z-RGBWAV is a latest technology fixture with superior LED Brightness and an HDMM control mode (High Definition Mechanical Motion)reaching up to 630° PAN and 270° Tilt 16-bit resolution. The ultra-compact design allows to reach the same brightness of traditional Moving Heads weighting only 9.35 Kgs. The 15 Channels DMX allow to control all the built-in function evei if Master/slave, Auto and Sound Controlled modes are onboard.

- » 36 high efficiency ESACromo 12W LED
- » Over 100000 hours of LED life
- » Projection type : wash
- » Color Tecnology : RGBWAV EsaCromo
- » Control mode : DMX512, Master/slave,Auto,Sound
- » User interface with Display LCD
- » DMX 512 compliant 16 CH
- » Linear dimmer 0-100%
- » Strobe flash rate: 1-13t-s
- » Pan: 630-540°16 bit
- » Tilt: 270°
- » Tilt/Pan silent mode rotation
- » Zoom angle: 25-65 degree
- » Automatic Pan and Tilt repositioning system



MHL-10W-36Z- RGBW

Wash moving head 12w - 6in1 - ZOOM Effect

» MHL-10W-36Z-RGBW is a latest technology fixture with superior LED Brightness and an HDMM control mode (High Definition Mechanical Motion)reaching up to 630° PAN and 265° Tilt 16-bit resolution. The ultra-compact design allows to reach the same brightness of traditional Moving Heads weighting only 9.35 Kgs. The 27 Channels DMX allow a pro DMX control all the built-in rich functions

- » 36 high efficiency QuadCromo 10W LED
- » Over 100000 hours of LED life
- » Projection type : wash
- » Color Tecnology : RGBW QuadCromo
- » Control mode : DMX512, Master/slave,Auto,Sound
- » User interface with Display LCD
- » DMX 512 compliant 27 CH
- » Linear dimmer 0-100%
- » Strobe flash rate: 1-13t-s
- » Pan: 630°
- » Tilt: 265°
- » Tilt/Pan Silent mode rotation
- » Beam angle: 40°
- » Automatic Pan and Tilt repositioning system



MHL-108-3W-RGBW

LED wash RGB 108 pcs moving head light

» MHL-108-3W-RGBW is a latest technology fixture with superior LED Brightness and an HDMM control mode (High Definition Mechanical Motion)reaching up to 630° PAN and 270° Tilt 16-bit resolution. The ultra-compact design allows to reach the same brightness of traditional Moving Heads weighting only 9.35 Kgs. The 15 Channels DMX allow to control all the built-in function evei if Master/slave, Auto and Sound Controlled modes are onboard.

- » 108 high efficiency QUAD-Cromo 3W LED
- » over 100000 hours of LED life
- » Projection type : wash
- » Color mixing : Quad-Cromo
- » Control mode : DMX512, Master/slave,Auto,Sound
- » User interface with Display LCD
- » DMX 512 compliant 15 CH
- » Linear dimmer 0-100%
- » Max consumption rate : 250 watt
- » Power requirements : AC 110-240V • 50-60Hz
- » Socket DMX IN : 3 pin XLR F
- » Socket DMX OUT : 3 pin XLR M
- » Dimensions : 33 x 22 x 45 cm

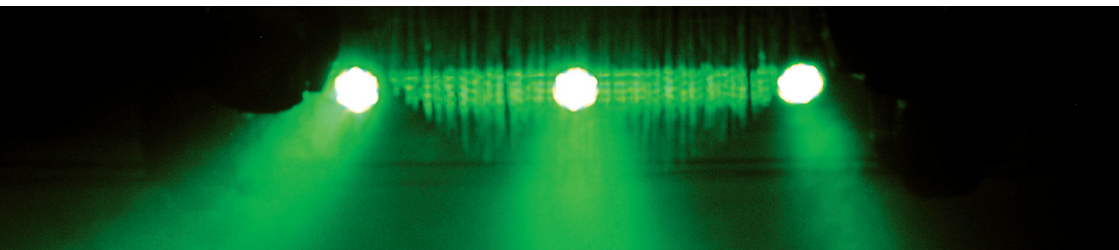


MHL-10W-7-RGBW

LED wash moving head light RGBW

» MHL-12W-7 moving head combines all the most important functions in one fixture. Compact design and powerful 12W LED make this fixture the top choice for all fixed and mobile installations.

- » 7 ultrabright QUAD-Cromo LED 10 watt
- » Projection type: wash
- » Color mixing : RGBW
- » Control mode : DMX512, Master/slave, Auto,Sound
- » Display user interface
- » 13 CH DMX512 protocol
- » Linear dimmer 0-100%
- » Strobe flash speed : 0-10t-s
- » Max power consumption : 60 watt
- » Socket DMX IN : 3 pin XLR F
- » Socket DMX OUT : 3 pin XLR M
- » Power : AC 100-240V • 50-60Hz
- » Dimensions : 23 x 24 x 27 cm



Spot Moving Heads



MHL60

60W LED Moving Head

» Moving Head is a great added value in lighting entertainment both for stage and installation. Thanks to LED technology these devices allow to save energy as well as having more power and reach top performances. The MHL60 features 1 60W High Brightness LED with an output of 4K Lumen LX with 8-16 bit resolution. All the function can be controlled via standard DMX 512 or via AUTO and SOUND CONTROLLED mode.

- » 1 x 60W High Brightness LED with SPOT Projection
- » LCD display control interface
- » Control Mode: DMX512, Master, Slave, Auto, Sound
- » Special Function: Pan/Tilt movement blackout and user-selectable pan/tilt ranges
- » Colors: seven diachronic-filters plus white, with rainbow-flow effect
- » Pan 540° and Tilt 270° with speed settings
- » Power Supply: 100 • 250 VAC
- » Power Consumption: 140 W
- » Led Configuration: 1 x 60W LED High Brightness with SPOT Projection
- » Control Mode: DMX 512, Auto, Slave, Sound
- » Dimmer: 0-100%

MHL-MINI SPOT

LED Mini Spot 40W Moving Head Light

» MHL-MINI-SPOT moving head combines all the most important functions in one fixture. Compact design and powerful 40W LED make this fixture the top choice for all fixed and mobile installations. With only 3.5 Kg of weight the installation becomes very quick and easy. DMX control and beautiful GOBOS draws and effects make this mobile heads a convenient choice for all most common spot applications like bars, clubs and small theater sets.

- » 1 ultrabright 40 Watt LED
- » Projection type: Spot
- » Color Wheel: 7 fixed color plus white
- » GOBO wheel: 9 fixed GOBOS plus 'neutro'
- » DMX controlled Flowage and Shake effects
- » Control mode : DMX512, Master, slave, Auto, Sound
- » Display user interface
- » 13 CH DMX512 protocol
- » Linear dimmer 0-100%
- » Strobe flash speed : 0-10t/s



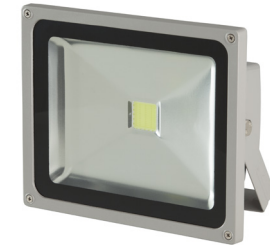
Strobe Lighting

LED-STR

LED Strobe Flash IP65

» Classic LED Strobe flash fixture. White flashing light with user adjustable speed. Comes with installation bracket. Thanks to IP65 protection grade it can be safely used for outside installations with no risk

- » 1 high-brilliance EPILED 30W LED
- » Colore LED: bianco
- » User adjustable: 1-10t-s
- » Comes with mounting bracket
- » Application : Live, theater, bar, disco



LST-3000

3000W DM Strobe light

» LST-3000 is an extremely powerful and professional strobe light. It is equipped with a powerful 3000W Xenon long lasting lamp and can be controlled by DMX512 protocol. The unit has a smart overheating electronic protection.

- » 3000 W long-lasting Discharge Xenon lamp
- » Color temperature: 5600K
- » Continuous blinder effects with auto fade
- » Smart integrated heat control
- » Fan cooling
- » 4 channels DMX, flash intensity, flash duration, flash rate and pre-programmed effects
- » Control modes: DMX, manual, master-slave
- » Dimmer: 0-100%
- » Flash speed: 1-25t-s
- » Rugged aluminum case

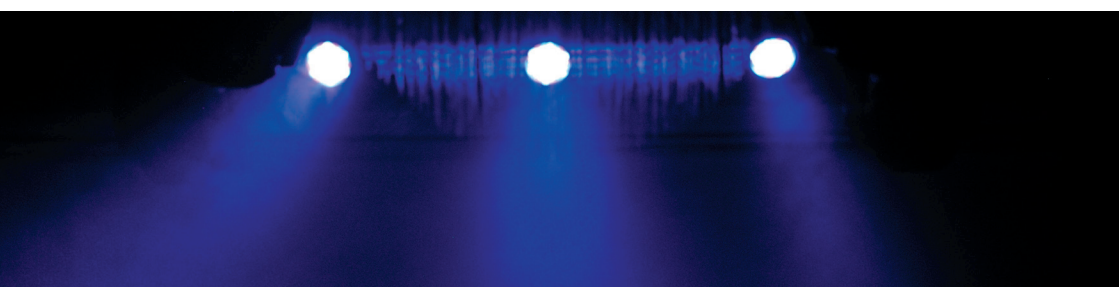


LST-1500

5000W DMX Strobe light

» LST-1500 is an extremely powerful and professional strobe light. It is equipped with a powerful 3000W Xenon long lasting lamp and can be controlled by DMX512 protocol. The unit has a smart overheating electronic protection.

- » 1500 W long-lasting XOP15 Discharge Xenon lamp
- » Color temperature: 5600K
- » Smart integrated heat control
- » Control modes: DMX, manual
- » 2 channels DMX, flash speed and dimmer
- » Dimmer: 0-100%
- » Flash speed: 1-15t-s



LED Pars

10W-12-4in1

Slim LED PAR light indoor 10W•12 PCS 6 IN 1

» LED projector with EsaCromo technology . The RGBAWU color is natively created in each lamp assuring a more uniform projection and avoid presence of dark zones respect to traditional fixture using addition groups of same color lamps to show the final color. You can use this fixture in every live, club, theater thanks to its flexibility and ease of use. The unit can work by DMX control , auto or sound mode. A 4 digit display allow to set up the program directly on the user interface on the back of the projector. Optimal for installation projects thanks to the presence of power outlet for serial power connection. Comes with mounting bracket.

- » 12 EsaCromo LED 10w 6in1 RGBAWU
- » Slim Design
- » DMX-512 5•3 CH Switchable
- » Function mode: Master•slave, manual, Sound, Auto
- » Linear Dimmer: 0-100•
- » Strobe Flash: 1-13 t-s
- » Light beam angle: 25•
- » UDE IN•OUT power outlet for serial installation
- » Applications: live, club, disco, theater



PAR64-3W-54

LED RGB 3W Projector

» LED projector with Quadcromo technology . The color is natively created in each lamp assuring a more uniform projection and avoid presence of dark zones respect to traditional fixture using addition groups of same color lamps to show the final color. You can use this fixture in every live, club, theater thanks to its flexibility and ease of use. The unit can work by DMX control , auto or sound mode. A 4 digit display allow to set up the program directly on the user interface on the back of the projector. Optimal for installation thanks to the presence of power outlet for serial power connection. Come with mounting bracket.

- » 54 LED RGBW(12 R, 12 G, 12 B, 12 W)
- » DMX-512 4-8 CH
- » Function mode: Master•slave, manual, Sound, Auto
- » Power outlet for serial installation
- » Linear dimmer: 0-100•
- » Strobe Flash: 1-13 t-s
- » Light beam angle: 30•
- » Aluminum rugged construction
- » Power requirement: AC220-240V 50-60Hz
- » Max consumption rate: 130 W
- » Dimensions: 26 x 26 x 18 cm
- » Weight: Kg 4.45



PAR-3W-16

LED RGB 3W Projector

» LED projector with Tricolor technology . The color is natively created in each lamp assuring a more uniform projection and avoid presence of dark zones respect to traditional fixture using addition groups of same color lamps to show the final color. You can use this fixture in every live, club, theater thanks to its flexibility and ease of use. The unit can work by DMX control , auto or sound mode. A 4 digit display allow to set up the program directly on the user interface on the back of the projector. Optimal for installation thanks to the presence of power outlet for serial power connection. Come with mounting bracket.

- » 16 TRI-Cromo LED RGB
- » DMX-512 7 CH
- » Function mode : Master•slave, manual, Sound, Auto
- » Power outlet for serial installation
- » Linear dimmer : 0-100•
- » Strobe Flash: 1-13 t-s
- » Power requirement : AC220-240V 50-60Hz
- » Dimensions : 25 x 25 x 34 cm
- » Weight : Kg 2



10W-6-4in1

LED RGBW 4in1 10W Projector

» LED projector with Quadcromo technology . The color is natively created in each lamp assuring a more uniform projection and avoid presence of dark zones respect to traditional fixture using addition groups of same color lamps to show the final color. You can use this fixture in every live, club, theater thanks to its flexibility and ease of use. The unit can work by DMX control , auto or sound mode. A 4 digit display allow to set up the program directly on the user interface on the back of the projector. Optimal for installation thanks to the presence of power outlet for serial power connection. Come with mounting bracket.

- » 6 Quadcromo 4in1 LED RGBW
- » DMX-512 5• CH
- » Function mode : Master•slave, manual, Sound, Auto
- » Power outlet for serial installation
- » Linear dimmer: 0-100•
- » Strobe Flash: 1-13 t-s
- » Light beam angle: 30•
- » Power requirement: AC220-240V 50-60Hz
- » Consumption rate: 60 W
- » Dimensions: 25 x 25 x 34 cm
- » Weight: Kg 2

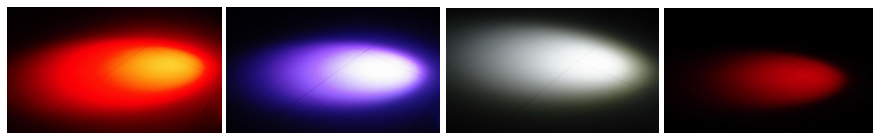


10W-6-5in1

LED RGBAW 5in1 10W Projector

» LED projector with Tricolor technology . The color is natively created in each lamp assuring a more uniform projection and avoid presence of dark zones respect to traditional fixture using addition groups of same color lamps to show the final color. The unit can work by DMX control , auto or sound mode. A 4 digit display allow to set up the program directly on the user interface on the back of the projector. Optimal for installation thanks to the presence of power outlet for serial power connection. Come with mounting bracket.

- » 6 Pentacolor LED 5in1 RGBAW
- » Max consumption rate: 85 W
- » Other features same as 10w-6-4in1



LED Pars

PAR64-10W-7

LED PAR 7 X 10W RGBW

» PAR64-10W-7 features 7 x 10W High Brightness LED with QUAD-Cromo technology (RGBW). It can be controlled via DMX 512 with up to 8 channels. It also has an electronic dimming from 0 to 100%, and it includes a hanging bracket so you can hang it where you most need it.

- » 7 x 10W High Brightness LED with QUAD-Cromo technology
- » RGBW color mixing
- » DMX 512 8 Channels
- » Dimmer: 0-100%
- » Application: live, club, disco, theater
- » Power: AC 0-240V 50-60Hz
- » Consumption: 100 W
- » DMX Connection: Input XLR3 F - Output XLR3 M
- » Dimensions: 15 x 15 x 23cm
- » Weight: 1 Kg



PAR64-3W-ALU

LED PAR 64 3W Light Projector

» Made in a rugged aluminum alloy, this LED Par 64 features 36 high-efficiency LED lights (12 red, 12 blue, and 12 green) for a nice, affordable addition to any lighting rig. The fixture can run in DMX mode (4 channels) or auto mode. It also has an electronic dimming from 0 to 100%, and it includes a hanging bracket so you can hang it where you most need it.

- » 36 high efficiency 3W LED (12 R, 12 G, 12 B)
- » RGB color mixing
- » DMX 512 6 ch control
- » Dimmer: 0-100%
- » Strobe flash: 1-13t/s
- » Rugged aluminum body
- » Application: live, club, disco, theater
- » Power: AC 0-240V 50-60Hz
- » Consumption: 120 W
- » Dimensions: 22.5 x 22.5 x 46.5 cm
- » Weight: Kg 3.2



PAR-3W-IP65

LED RGBW 3W Outdoor Projector

» IP65 certified Projector for all outdoor use. Sealed against moisture and rain. Thanks to Quadcromo technology the color is natively created in each lamp assuring a more uniform projection and avoid presence of dark zones respect to traditional fixture using addition groups of same color lamps to show the final color. You can use this fixture in every live, club, theater thanks to its flexibility and ease of use. The unit can work by DMX control, auto or sound mode. A 4 digit display allow to set up the program directly on the user interface on the back of the projector.

- » 54 Quadcromo 4in1 LED 3W RGBW
- » DMX-512 5 CH
- » Function mode: Master/slave, manual, Sound, Auto
- » External temperature working range: da -10°C a +40°C
- » Linear dimmer: 0-100%
- » Strobe Flash: 1-13 t-s
- » Light beam angle: 30°
- » Diecast Aluminum rugged construction
- » Power requirement: AC220-240V 50-60Hz
- » Max consumption rate: 180 W
- » Dimensions: 14.8 x 14.8 x 10.3 cm
- » Weight: Kg 10.7



PAR64-ENTRY

LED PAR 64 Light Projector

» This LED Par 64 features 177 10mm LED lights (60 red, 60 blue, and 57 green) for a nice, affordable addition to any lighting rig. The fixture can run in DMX mode (4 channels) or auto mode. It also has an electronic dimming from 0 to 100%, and it includes a hanging bracket so you can hang it where you most need it.

- » 177 high efficiency 10mm 1W LED (60 R, 60 G, 57 B)
- » RGB color mixing
- » DMX 512 4 ch control
- » Dimmer: 0-100%
- » Application: live, club, disco, theater
- » Power: AC 0-240V 50-60Hz
- » Consumption: 36 W
- » Dimensions: 22.5 x 22.5 x 46.5 cm
- » Weight: Kg 2.2



PAR64B-ENTRY

LED PAR 64 Light Projector

» This LED Par 64 features 177 10mm LED lights (60 red, 60 blue, and 57 green) for a nice, affordable addition to any lighting rig. The fixture can run in DMX mode (4 channels) or auto mode. It also has an electronic dimming from 0 to 100%, and it includes a hanging bracket so you can hang it where you most need it.

- » 177 high efficiency 10mm 1W LED (60R, 60G, 57B)
- » RGB color mixing
- » DMX 512 4 ch control
- » Dimmer: 0-100%
- » Application: live, club, disco, theater
- » Power: AC 0-240V 50-60Hz
- » Consumption: 36 W
- » DMX Connection: Input XLR3 F - Output XLR3 M
- » Dimensions: 22.5 x 22.5 x 46.5 cm
- » Weight: Kg 2.2



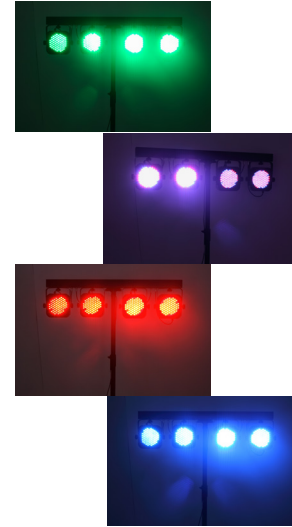
LED Kits



4 LEDKIT-MKII

Compact 4 LED panel set

» 4 LED kit complete bundle - the hottest and comfortable solution for bands and entertainers. Successor of 4LEDKIT, the new MKII version is 70% more brilliant and over 50% lower in weight and dimensions. Ultra-bright RGB LEDs, easy setup and a never seen power saving thanks to the LED technology make of this product a must-have. Comes with a carrying bag for simple transportation.



- » 4 lightweight LED light panels with 4 High-brilliant 10W LED per panel - totally 16 LED
- » 70% brighter, 50% more compact and 50% lighter than 4LEDKIT
- » 50,000 hours long life LED
- » RGBW color mixing
- » DMX Control Channels mode: 6 or 18CH
- » Color Strobe
- » Master/Slave synchronization
- » DMX-512 protocol
- » Electronic Dimmer 0-100%
- » Operating Modes: Sound activation, Auto, Static color, DMX mode
- » LED operation menu with function buttons and DMX control mode
- » Foot controller
- » Digital display for address and function setting
- » Each fixture can be operated independently



Mini Spots & Beams



MSPOT series

Mini Spot LED Light

» A useful fixture for a very wide set of applications when the goal is to focus on a detail or a specific area like a shop window or a sound engineer station during a live show. It comes with a mounting bracket.

- » One color high luminance LED
- » Available Colors : Blue, Red, White, Yellow
- » Consumption : 30 W
- » Power requirement: 240V
- » Dimensions : 16 x 10 x 8 cm
- » Weight : Kg 1.3



MBL-3W-WHITE

3W White Mini Beam Light

» The MBL-3W-white is a directional beam projector. The onboard high brightness 3W LED ensure a 5 cm beam diameter. Thanks to its versatility this item can be used in all kind of entertainment (Disco, Club, Live, Theater, etc.)

- » 1 x 3W High Brightness White LED
- » 5 cm Beam Diameter
- » Control Mode: On/Off
- » Ultra-rugged case with included rotating fixing plate
- » Application: live, club, disco, theater
- » Power Supply: 110-240 V AC 50-60 Hz
- » Dimension: 15cm x 6cm x 8cm
- » Weight: 0.3 Kg

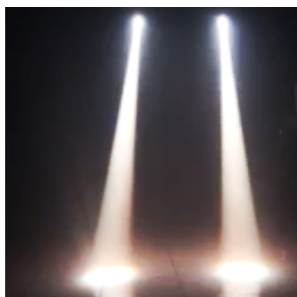


MBL-10W-WHITE

10W White Mini Beam Light

» The MBL-10W-white is a directional beam projector. The onboard high brightness 10W LED ensure a 5 cm beam diameter that can be controlled via DMX512 up to 2 Channels. Thanks to its versatility this item can be used in all kind of entertainment (Disco, Club, Live, Theater, etc.)

- » 1 x 10W High Brightness White LED
- » 5 cm Beam Diameter
- » Control Mode: DMX512 up to 2 Channels (dimmer, strobo)
- » Ultra-rugged case with included rotating fixing plate
- » Application: live, club, disco, theater
- » Power Supply: 110-240 V AC 50-60 Hz
- » Dimension: 15cm x 6cm x 8cm
- » Weight: 0.3 Kg



MBL-10W-RGBW

10W RGBW Mini Beam Light

» The MBL-10W-RGBW is a directional beam projector. The onboard high brightness 10W LED with QUAD Cromo technology ensure a 5 cm beam diameter that can be controlled via DMX512 up to 6 Channels, in Auto Mode or Sound Controlled. Thanks to its versatility this item can be used in all kind of entertainment (Disco, Club, Live, Theater, etc.)

- » 1 x 10W High Brightness RGBW LED with QUAD Cromo technology
- » 5 cm Beam Diameter
- » Control Mode: DMX512 up to 6 Channels, Auto mode, Sound Controlled
- » Ultra-rugged case with included rotating fixing plate
- » Application: live, club, disco, theater
- » Power Supply: 110-240 V AC 50-60 Hz
- » Dimension: 15cm x 6cm x 8cm
- » Weight: 0.3 Kg



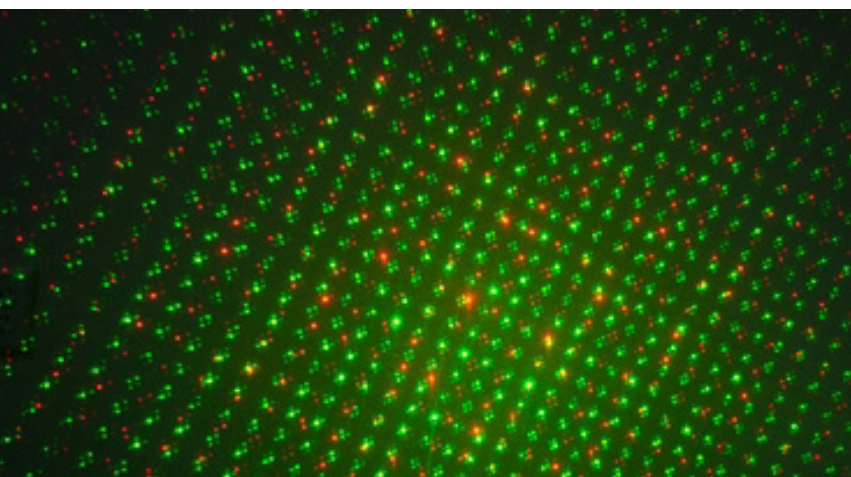
Lasers

LSR-GB

Mini Laser green+red

» Compact bi-color laser with spectacular geometry and light beam drawing . Suitable for all live, disco and theater applications.

- » Laser power : Red 20mW, Green 50mW
- » Control mode : Sound activated, auto.
- » Scanning mode: +, - 40 degrees
- » Firefly effects



Lighting FX

BFL2-10W

LED BUTTERFLY LIGHT 2 X 10W RGBW

» LED BUTTERFLY LIGHT is a light effect that feature 2 x 10W High Efficiency LED with QUAD-Cromo RGBW technology. The integrated control modes are: Dimmer, Strobe, Sound Controlled, Master+Slave and DMX512 up to 7 Channels. Thanks to its features it can be installed in Dance Hall, Clubs and theaters.

- » 2 -10W high efficiency LED with QUAD-Cromo technologies
- » RGBW color mixing
- » DMX 512 7 channels
- » Dimmer: 0-100%
- » Strobe: 0-20Hz
- » Control Mode: Dimmer, Strobe, Sound Controlled, Master+Slave, DMX512
- » Application: Club, disco, theater
- » Power: AC 0-240V 50-60Hz
- » Power Consumption: 40 W
- » DMX connection: Input XLR3 F - Output XLR3 M
- » Dimension: 24 x 21 x 16
- » Weight : 2.1 Kg



CB140

Music Crystal Ball with built-in USB Player

» This new Compact crystal magic ball and its new lighting effects is perfect for your party or any other event. Its light spot on the wall, the effect are very bright and powerful. Strobe effects, red, green and blue three colors change. Thanks to the integrated audio player you can play .mp3 files from a USB stick. Suitable for ballroom, bar, stage, club, party etc.

- » 6 LED 1W (2R 2G 2B)
- » Built-in USB audio player
- » Color mixing: RGB
- » Auto sound active mode
- » Included accessories : remote control (batteries not included), key USB
- » Power requirements: AC 110-240v, 50-60hz
- » Consumption: 25 watt
- » Dimensions: 18.3-18.3-15.4cm
- » Weight: Kg 1.5



Lighting FX

DM540

Double Moon Light LED Effect

» A nice LED Double Moon Effect light with the ambition to be the star of your light show. With its stunning, sharp effects and brilliant long life LEDs, DM540 is all you need. You can use a wide range of effects and it can work in auto mode or sound activation and use the strobo flash function. Easy to install and operate DM540 is a fixture for every occasion.

- » 88 Leds 5 mm (32 Red, 12 Green, 24 Blu, 12 White, 8 Yellow)
- » DMX512 6 channel control
- » Linear Dimmer
- » Strobe flash
- » Function Mode : auto, DMX, sound activation
- » Consumption : 15 W
- » Power requirements : AC230V • 50Hz-60Hz
- » Dimensions: 14,7 x 33 x 12
- » Weight : Kg 6

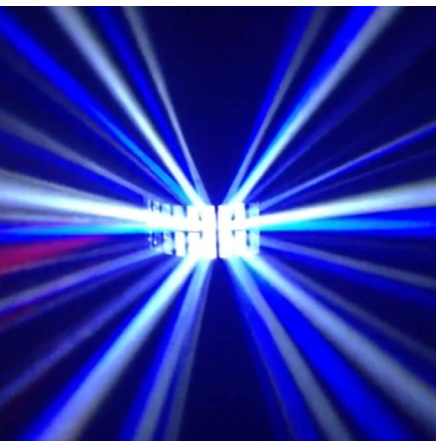


ESL-4

ENDLESS SWORD LIGHT 4 COLORS RGBW

» The ENDLESS Sword Light is a rotating light effect designed for Clubs and theaters entertainment. It features 4 High brightness 3W LEDs with Quad-Cromo technology (RGBW). The rotating system can run till 45 rpm giving the "End-Less" effect and it can be controlled in Auto Mode, Master•Slave, Sound controlled and DMX 512 up to 8 Channels.

- » 4 • 3W high efficiency LED with QUAD-Cromo technologies
- » RGBW color mixing
- » DMX 512 8 channels
- » Dimmer: 0-100%
- » Strobe: 0-20Hz
- » Control Mode: Dimmer, Master•Slave, Sound controlled and DMX512
- » Application: Club, disco, theater
- » Power: AC 0-240V • 50-60Hz
- » Power Consumption: 40 W
- » DMX connection: Input XLR3 F - Output XLR3 M
- » Dimension: 44 x 37 x 31 cm
- » Weight : 5 Kg



Lighting FX



FEL-256

FOUR EYES LED RGBW 30W

» The Four Light LED system is a metal bar with 4 projectors. Each one features 64 5mm LEDs for a total of 256 LEDs. The integrated control modes are: Auto, Master•Slave, Sound controlled and DMX512 up to 7 Channels. A 0-100% dimmer is available as well as a 0-20Hz Strobe. The 2 fixing plates are mounted on the top part of the unit giving the freedom to install this powerful system everywhere.

- » 256 high efficiency 5mm LED (64R, 64G, 64B, 64W)
- » RGBW color mixing
- » DMX 512 7 channels
- » Dimmer: 0-100%
- » Strobe: 0-20Hz
- » Control Mode: Auto, Master•Slave, Sound controlled, DMX512
- » Application: live, club, disco, theater
- » Power : AC 0-240V • 50-60Hz
- » Power Consumption : 30 W
- » Dimension : 8,5 x 20,5 x 17 cm
- » Weight : Kg 7,5



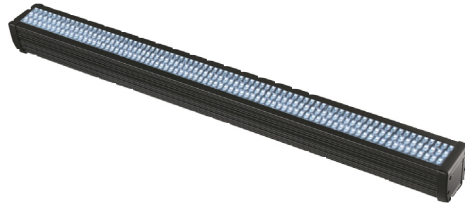
LED Bars

STRB-988J

Wash Led bar RGB DMX

» Soundsation LED bar STRB- 88J is a wash projection led bar for an infinite range of application. You can control by DMX protocol on live shows or set programs directly on the fixture : very useful for fixed installations.

- » 255 Led 10 mm 1W - (108 R , 72 G , 72 B)
- » DMX 512 13 CH control
- » Function mode : DMX, Auto, manual
- » Function : dimmer , strobo flash
- » Aluminum case black finishing
- » Applications : live - teathre - club - restaurant
- » Max consumption rate : 38W
- » Power : AC 220V-240V • 50 Hz
- » Dimensions : 1010 x 65 x 88 mm
- » Weight : Kg 3.3



WW-1W-24

Outdoor RGB DMX Wash Led Bar

» Soundsation LED bar WW-1W-24 is a wash projection led bar for an infinite range of application. You can control by DMX protocol on live shows or set programs directly on the fixture : very useful for fixed installations. Waterproof IP65 alu case for safe outdoor use.

- » 24 LED RGB 1W - (8 R , 8 G , 8 B)
- » DMX 512 5 CH control
- » Function mode : DMX, Auto, manual
- » Function : dimmer , strobo flash
- » IP65 aluminum case
- » Applications : live - teathre - club - restaurant
- » Max consumption rate : 38W
- » Power : AC 220V-240V • 50 Hz
- » Dimensions : 830x65x 88 mm
- » Weight : Kg 3.5



WASH-988

Led wall washer light 36•0w (4in)

» New design wash light fixture based on ultrahigh-power RGBW 4in(10 W) led lamps. Rich and vivid colors give scene enthusiastic feelings. Designed for use in every kind of application needing intense light like live events, disco bar. Great for illumination of building or advertising walls. IP65 certified.

- » 36 Quadcromo Led lamps 10w RGBW (4in)
- » Color mixing: RGB
- » DMX512 5• channel control mode
- » Control mode: DMX,Master•Slave, Auto, manuale, sound activated
- » Linear dimmer: 0-100•
- » Strobo Flash: 1-13t-s
- » Light beam angle: 45•
- » IP rate: IP65
- » Power requirements: AC 220-240V • 50-60 Hz
- » max consumption: 300 watt
- » Dimensions: 57 x 38 x 34 cm
- » Weight : Kg 16



MTR-16-30W

16 pcs 480W COB LED Matrix

» COB LED Technology allows to double the brightness of traditional LED. This Matrix features 16 LED 30W each with TRI-Cromo technology delivering up to 5.000 K at 5 meters. All the components onboard are Top reliability like NEUTRIK connectors and 16-bit linear dimmer chip. Thanks to the 23 channels DMX it's possible to obtain all the 16 LED combination even if it's possible to control the unit also in AUTO, SOUND and MASTER•SLAVE modes.

- » 16 pcs 30W High-brightness COB LED
- » TRI-Cromo technology
- » up to 5.000 K 5 meters
- » High-reliability components
- » Ideal for: General Entertainment - Live Concert - Disco Hall - Club - Theater
- » Power Supply: AC 110V-240V, 50•60 Hz
- » Power plug: Neutrik speakon
- » Dimmer: 16 bit electric linear dimmer
- » Strobe speed: 0-20 Hz
- » Color temperature: 5000 K 5 meters



LED Strips

» Flexible LED Strip for installers to fit a variety of applications for both indoor and outdoor use, thanks to the IP65 degree of protection that ensures resistance to weathering and rain. They are equipped with a built-in 3M adhesive for easy mounting on curved surfaces. Reel 5 mt cuttable according to the application.

805

IP 65 - 5 mt - 300 Led

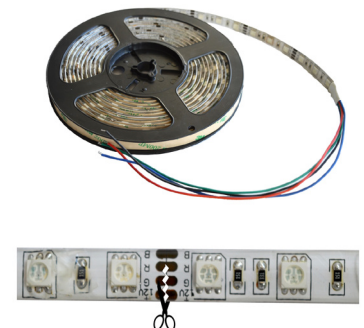
- » Led type: RGB (total quantity 300 LED)
- » Length : 5 meters
- » IP level : IP65
- » Power requirements : 12V
- » Splittable: Yes



804

IP 65 - 5 mt - 600 Led

- » Led type: RGB (total quantity 600 LED)
- » Length : 5 meters
- » IP level : IP65
- » Power requirements : 24V
- » Splittable: Yes



DMX Controllers



LC100

12 Channels DMX512 Lighting controller

» LC100 allows to control up to 12 DMX512 Channels driving 12 different units in the same time. The brand new chipset ensure the editing of 240 scenes (30 banks of 8 scenes each) and features 6 chase location. With 8 independent faders you can easily control Moving Heads and any other DMX peripheral and thanks to the built-in microphone it can detect audio peaks and synchronize the entire system. The LCD display allows to check all the parameters both in Editing and Manual configuration mode. The ultra-rugged (3U rack) metal chassis has been studied to be compact and transportable.

- » 12 units Real-time controller
- » 12 DMX 512 Channels
- » 240 programmable scenes (30 banks of 8 scenes each)
- » Control mode: Auto, Manual, Recall, MIDI and Music
- » Blackout function
- » Speed regulation from 0,1 to 25,5 sec.
- » Built-in microphone for audio peaks detection
- » 6 Chase location for the links of the scenes
- » Power Supply: 220 V AC 50 Hz
- » 51,3 x 27 x 14,5 cm
- » Weight: 4,25 Kg



LC200

Professional DMX512 controller

» LC200 is a professional Ultra-compact DMX512 controller able to drive up to 12 Units simultaneously. The on-board memory allows to store 240 different scenes and link them in 6 Chase location. The control modes are Manual, Auto or Music synchronized thanks to the built-in microphone or the Line-In input. The 2 40mm Joysticks provide a fine regulation of PAN and TILT as well as the 2 independent faders allows an extreme precise control of SPEED and FADE-TIME. The entire system can be controlled via MIDI (Banks, Scenes and Blackout) and the Override function help to grab any fixture in real time. The ultra-light metal chassis can be easily placed everywhere and ensure a comfortable transportation.

- » 12 scanners Real-time controller
- » 12 DMX 512 Channels
- » 240 programmable scenes (30 banks of 8 scenes each)
- » Control mode: Auto, Manual, Recall, MIDI and Music
- » Blackout function via Midi
- » Speed regulation from 0,1 to 25,5 sec.
- » Built-in microphone or Line-In connection for audio peaks detection
- » 6 Chase location for the links of the scenes
- » Power Supply: -12 VDC 300 mA min. (Power adaptor included)
- » Dimension: 48,2 x 1 x 05 cm
- » Weight: 2,5 Kg

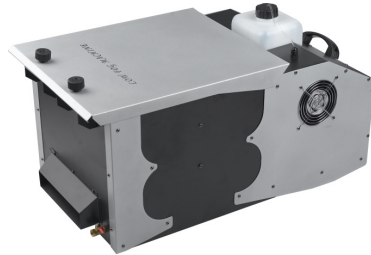
Smoke & FX machines

SM3000-MKII

3000w Smoke machine MKII

» SM3000-MKII is a stage special effect machine producing smoke in the air, thus giving an engaging atmosphere to the scene emphasizing light effects. It features a 3000W heater and an output of over 1000 cubic meter per minute. You can remotely control the unit thanks to the remote controller or control by a DMX512 controller. It comes with a hanging bracket.

- » Power: 3000 Watt
- » DMX512
- » Smoke output: 1100 m³•min
- » Shooting distance: 10 meter
- » Remote control with 80 meter control range
- » Heater power: 3000W
- » Tank capacity: 5.5 liter
- » Application : Live - Theater - big size event



SM1200

1200w Smoke machine

» SM1200 is a stage special effect machine producing smoke in the air, thus giving an engaging atmosphere to the scene emphasizing light effects. It features a 1200W heater and an output of 550 cubic meter per minute. You can remotely control the unit thanks to the remote controller. It comes with a hanging bracket.

- » Power: 1200 Watt
- » Tank capacity: 2 liter
- » Smoke output: 550m³•min
- » Shooting distance: 10 meter
- » Remote control with 80 meter control range
- » Heater power: 1200W
- » Application : Live - Theater - medium size event
- » Power requirements: AC110V-130V • 50-60HZ
- » Dimensions: 52 x 21 x 23 cm
- » Weight: 4.7kg



FMA 1500

Machine with angled arm

» SM1200 is a stage special effect machine producing smoke in the air, thus giving an engaging atmosphere to the scene emphasizing light effects. Thanks to the multi-angle stand it is possible to adjust the projection area according to the event and ambience. It features a 1500W heater and an output of 1000 cubic meter per minute. You can remotely control the unit thanks to the remote controller. It comes with a hanging bracket.

- » Power: 1500 Watt
- » Tank capacity: 5 liter
- » Smoke output: 1000 m³•min
- » DMX control
- » Shooting distance: 10 meter
- » Remote control with 80 meter control range
- » Heater power: 1500W
- » Application : Live - Theater - medium size event



SM400

400w Smoke machine

» SM1200 is a small scene special effect machine producing smoke in the air, thus giving an engaging atmosphere. Ideal for room party. It features a 400W heater and an output of over 50 cubic meter per minute. You can remotely control the unit thanks to the remote controller. It comes with a hanging bracket.

- » Power: 400 Watt
- » Tank capacity: 1 liter
- » Smoke output: 50m³•min
- » Shooting distance: 6 meter
- » Remote control with 80 meter control range
- » Heater power: 400W
- » Application : party rooms, small events
- » Power requirements: AC110V-130V • 50-60HZ
- » Dimensions: 16.5 x 12.5 cm
- » Weight: 2 kg



LEDBM-300

LED Bubble machine

» The Bubble Machine is a device that allows to get Cool and amusing events. In the past has been used mainly in clubs and theaters but recently it become used also in children parties and generally in every party event. The bubbles can reach an height of 10 Meters and are lightened by the LEDs array placed on the upper side of the machine, thus creating a cool colored ambience. The remote Control (included) allows to control the unit in a scope up to 50 meters giving a complete freedom to place the machine.

- » 300W Ultra-compact unit
- » 20 pcs 3 Watt EPILED LED RGB
- » Electronic Dimmer 0-100%
- » Extreme easy-to-use device
- » DMX Control
- » 50 meters scope Remote control (included)
- » Application: Disco - Club - Theater - Children parties



HM-900

Hazer machine with flight case

» The machine H900 by Soundsation is able to generate a constant flow of light smoke similar to natural fog. This effect is highly requested in modern Stage shows and theaters. H900 can be controller by console through buttons and LCD Display or remotely via DMX protocol. Though for professional use, the machine is integrated in a rugged Flight Case, thus allowing a quick and easy frequent setup and transportation.

- » Emits a light continuous smoke flow similar to natural fog
- » Machine is integrated in a Flight Case
- » Console control (buttons and LCD display) or DMX512
- » Fog Output: 100m³ per minute
- » Tank capacity: 2.5 L
- » Consumption: 6H working time per liter
- » Controlled parameters: Spray on/off, fan speed, oil speed
- » Timer
- » Applications: Disco and Club, Live performance, Stage show



Smoke & FX machines

LBM-300

300W Bubble Machine

» The Bubble Machine is a device that allows to get Cool and amusing events. In the past has been used mainly in clubs and theaters but recently it become used also in children parties and generally in every smaller event. The bubbles can reach an height of 10 Meters and the total output is 600 cubic meters. The remote Control (included) allows to control the unit in a scope up to 50 meters giving a complete freedom to place the machine.

- » 300W Ultra-compact unit
- » Extreme easy-to-use device
- » DMX Channel 1 : On-Off
- » 50 meters scope Remote control (included)
- » Application: Disco - Club - Theater - Children parties
- » Output: 600 cubic meters
- » Bubble Liquid Container: 2.5 L
- » Blowing Height: 10 M
- » Dimension: 45 x 3 x 41 cm



HB100

1200w Party Hubble Bubble machine

» SNF1200 is a party special effect machine producing bubbles flying in the sky, thus creating a funny and nice ambience for friends and kids at home or party rooms. Shoot large amount of bubbles in the air with strong force reaching long shooting distance at little noise level.

- » Power: 100 Watt
- » Tank capacity: 2 liter
- » Shooting distance: 7 meter
- » Power requirements: AC220V-240V - 50-60HZ
- » Dimensions: 20,5 x 23,5 x 21,5 cm
- » Weight: 2.8 kg

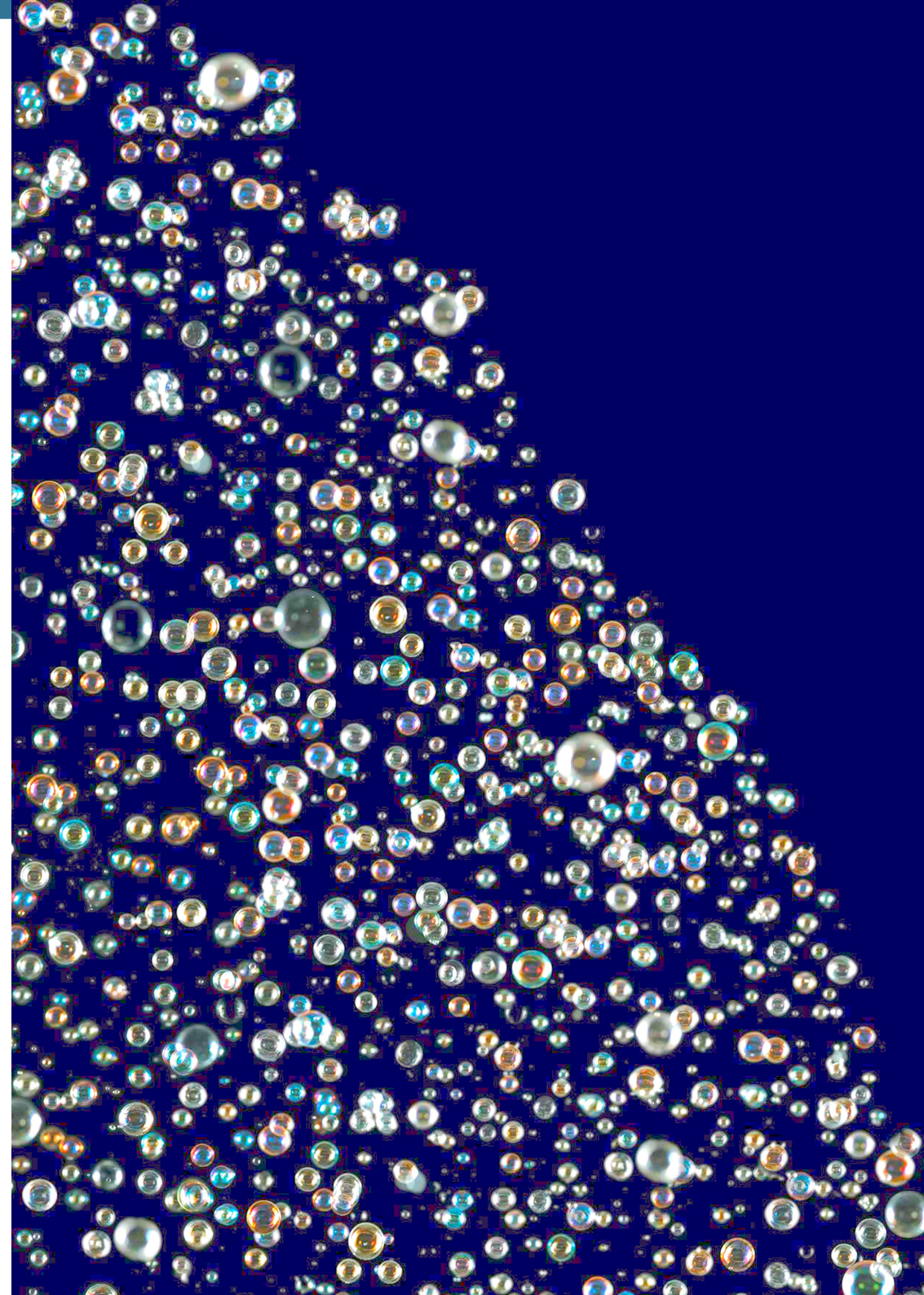


SNF1200

1200w Snowflake machine

» SNF1200 is a stage special effect machine producing numerous snow flakes flying in the sky, thus creating romantic feelings. Spout a large amount of flakes with strong force reaching long shooting distance at little noise level.

- » Power: 1200 Watt
- » Tank capacity: 5 liter
- » Output: 50m³/min
- » Shooting distance: 7 meter
- » Power requirements: AC110V-130V • 50-60HZ
- » Dimensions: 5 x 38 x 38 cm
- » Weight: 6.75kg



Hanging tools



SLH001

Fixture Pipe Clamp 1" to 2.5"

- » Accessory to hook any mobile head or fixture to a light stand or truss system from 1" to 2.5" pipe diameter.
- » Made by : metal
- » Type: Locking Screw
- » SWL (Safe Working Load): Kg 30
- » Finishing : metal
- » For 1" to 2" Pipes

SLH002

Fixture Pipe Clamp 1.57"

- » Accessory to hook any mobile head or fixture to a light stand or truss system with 1.57" pipe diameter.
- » Made by : metal
- » Type: Locking Screw
- » SWL (Safe Working Load): Kg 25
- » Finishing : black
- » For 1.57" Pipes



SLH005

Fixture Pipe Clamp 1" to 2.5"

- » Accessory to hook any mobile head or fixture to a light stand or truss system from 1" to 2.5" pipe diameter.
- » Made by : metal
- » Type: Locking Screw
- » SWL (Safe Working Load): Kg 30
- » Finishing : metal
- » For 1" to 2.5" Pipes

SLH006

Fixture Pipe Clamp 1.38" to 1.57"

- » Accessory to hook any mobile head or fixture to a light stand or truss system with 1.38" to 1.57" pipe diameter.
- » Made by : aluminum
- » Type: Locking Screw
- » SWL (Safe Working Load): Kg 30
- » Finishing : all
- » For 1.38 - 1.57" Pipes



SLH007

Lighting Half coupler 2"

- » Accessory to hook any mobile head or fixture to a light stand or truss system with 2" pipe diameter.
- » Made by : aluminum
- » Type: Locking Screw
- » SWL (Safe Working Load): Kg 80
- » Finishing : aluminum
- » For 2" pipes

SLH009

Lighting Half coupler 1.18" to 2.35"

- » Accessory to hook any mobile head or fixture to a light stand or truss system from 1.18" to 2.35" pipe diameter.
- » Made by : aluminum
- » Type: Locking Screw
- » SWL (Safe Working Load): Kg 30
- » Finishing : aluminum
- » For 1.18" to 2.35" pipes



SLH010

Lighting Pipe Clamp 1.57" to 2.3"



- » Accessory to hook any mobile head or fixture to a light stand or truss system with 1.57" to 2.3" pipe diameter.
- » Made by : aluminum
- » Type: Locking Screw
- » SWL (Safe Working Load): Kg 20
- » Finishing : aluminum
- » For 1.57" to 2.3" diameter pipes

LW2

Lighting Safety Wire

- » Safety wire for every can of lighting fixture hooked on lighting stands or truss system by half couplers or clamps. It comes with an undetachable carbine hook.
- » Steel reinforced wire
- » Diameter : 3 mm
- » Totale Length : 85 cm
- » Max working load : Kg 25
- » Included Undetachable carbine hook



Fluids

SM5L

Smoke machine high-density fluid

- » SMOKEFLUID PRO is a show smoke machine professional fluid ensuring a longer persistence of the smoke in the air and extending the machines life thanks to high chemical purity. It can be used outdoor or indoor with no risk for health. Not hazardous.
- » Extend the machines life thanks to high chemical purity
- » 5 liter tank



ESM4L

Smoke machine light-density fluid

- » Smoke machine liquid for outdoor or indoor with no risk for health. Not hazardous.
- » Health-safe smoke emission
- » Conform for use with most common smoke machine
- » 5 liter tank



SF5L

Snoflake machine fluid

- » Fluid for show professional snowflake machine. Ensuring emission of longer persistence flakes in the air It can be used outdoor or indoor with no risk for health. Not hazardous. Suitable for most common snowflake machines.
- » High-density and persistent snowflakes
- » For safe outdoor and indoor use
- » 5 liter tank



ABS5L

Hubble bubble machine fluid

- » ABS5L is a show hubble bubble machine professional fluid ensuring emission of persistent bubbles in the air. It can be used outdoor or indoor with no risk for health. Not hazardous. Suitable for most common bubble machine.
- » Ensure dense and persistent bubbles
- » For safe use indoor and outdoor
- » 5 liter tank



Stands

LS-100

Steel light stand w/T-Bar

» T-bar light stand built in steel to provide maximum reliability and strength, featuring foldable tripod for easy transportation. The snap lock holder on height adjustment collar prevents the safety pin from scratching the tubes finish during transportation.

- » Height: 1.10 - 2.50mt
- » Arm length: 9.5mt
- » Arm diameter: 25x25mm
- » Load capacity: 30kg
- » Material: steel
- » Snap lock holder on height adjustment collar prevents scratching on the tubes finish during transportation



LS-200

Black Anodized Aluminium light stand w/T-Bar

» Professional T-bar light stand built in anodized aluminium to provide maximum lightness and strength, featuring foldable tripod for easy transportation. The snap lock holder on height adjustment collar prevents the safety pin from scratching the tubes finish during transportation.

- » Height: 1.45 - 3.25mt
- » Arm length: 1.22mt
- » Arm diameter: 38x38mm
- » Load capacity: 50kg
- » Material: black anodized aluminium
- » Snap lock holder on height adjustment collar prevents scratching on the tubes finish during transportation

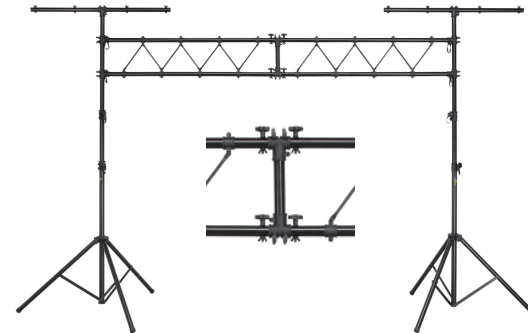


LS-300-TR

Black Anodized Aluminium structure for lighting

» Black anodized aluminium structure for lighting featuring 2 LS-200 professional stand w/T-bar and 2 horizontal bars for 8 par cans. The snap lock holder on height adjustment collar prevents the safety pin from scratching the tubes finish during transportation.

- » Height: 1.45 - 3.25mt
- » Arm length: 1.5 - 4.0mt
- » Arm diameter: 38mm
- » Load capacity: 100kg
- » Material: anodized aluminium nero
- » Snap lock holder on height adjustment collar prevents scratching on the tubes finish during transportation
- » Weight: 20kg





www.soundsationmusic.com

www.soundsationmusic.com



sound*sation*

a division of

FRENEXPORT SpA

Via Enzo Ferrari 10 - 62017 Porto Recanati - ITALY

info@soundsationmusic.com

SOUNDSATION is a registered trademark of FRENEXPORT SpA. All rights reserved.