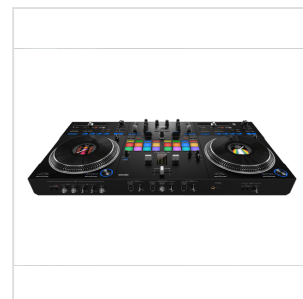
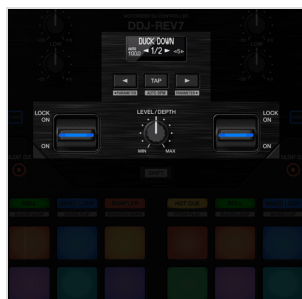


DDJ-REV7

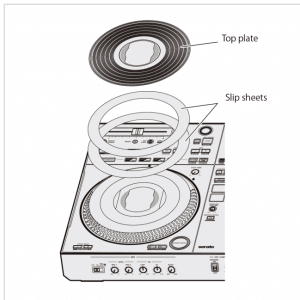
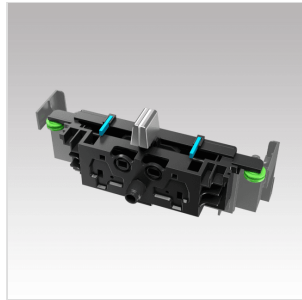
SCRATCH-STYLE 2-CHANNEL PROFESSIONAL DJ CONTROLLER FOR SERATO DJ PRO

The DDJ-REV7 is built to help you get the most from the Serato DJ Pro performance software and boasts a brand-new design that includes large, motorized jog wheels with On Jog Display to create a tactile connection between you and your music. The layout of this 2-channel unit emulates a professional DJM-S mixer + PLX turntable setup, and includes specialized features for open-format and scratch DJs.



DDJ-REV7

SCRATCH-STYLE 2-CHANNEL PROFESSIONAL DJ CONTROLLER FOR SERATO DJ PRO



DDJ-REV7

SCRATCH-STYLE 2-CHANNEL PROFESSIONAL DJ CONTROLLER FOR SERATO DJ PRO

HIGHLIGHTS

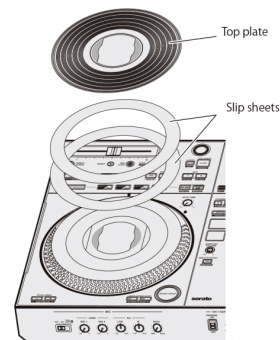


BRAND-NEW MOTORIZED, VINYLIZED JOG: FEEL LIKE YOU'RE PLAYING WITH RECORDS

At the heart of each deck on the DDJ-REV7 is the new 7-inch motorized jog wheel which features the same rotational stability as a 12-inch turntable and is built to feel like you're playing with real records.

VINYLIzed JOG: CUSTOMIZE THE FEELING

The acrylic top plate is finished with a vinyl-like texture for effortless finger grip, and you can choose between low and high torque settings and use the two slip sheets included inside each deck to find your preferred amount of friction. Switch between a rotation speed of 33? or 45rpm whenever you like and use the Stop Time setting to adjust how long it takes for the music to end when you press pause.



DDJ-REV7

SCRATCH-STYLE 2-CHANNEL PROFESSIONAL DJ CONTROLLER FOR SERATO DJ PRO

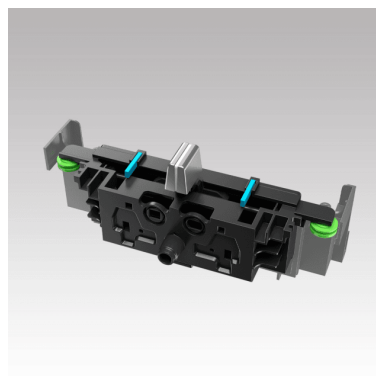


ON JOG DISPLAY: KEEP AN EYE ON ESSENTIAL INFORMATION

In the center of each jog wheel, a 3.5-inch LCD keeps important information at your fingertips so there's far less need to switch your gaze between the decks and your laptop. Thanks to an omnidirectional viewing angle, you can see what's being displayed from any angle, and you can turn off the digital marker that indicates the playback position whenever you want. You can also mark each jog wheel with the included stickers if you prefer this method to the digital marker.

MAGVEL FADER PRO: SCRATCH FREELY

Scratch with style and confidence when you use the MAGVEL FADER PRO. As well as being highly robust, it's customizable with various settings to help you find the feel that's right for you.



DDJ-REV7

SCRATCH-STYLE 2-CHANNEL PROFESSIONAL DJ CONTROLLER FOR SERATO DJ PRO

PRODUCT DETAILS

KEY FEATURES

Brand-new motorized, VINYLIZED JOG: Feel like you're playing with records

VINYLIZED JOG: Customize the feeling

On Jog Display: Keep an eye on essential information

Instant Scratch: Rapidly fire samples with dedicated buttons

MAGVEL FADER PRO: Scratch freely

22 built-in Beat FX including 3 new additions: Dynamically change the sound

Portable, sophisticated design: Take your performances anywhere

Silent Cue

Smooth Echo

Plug and Play

A voucher for the Serato Pitch 'n Time DJ Expansion Pack is included

High-quality audio

SPECIFICATIONS

Compatible DJ	Software Serato DJ Pro
DVS Contro	I Serato DVS (Paid upgrade)
Software System Requirements	Visit serato.com for its specifications
Soundcard	24 bit/48 kHz
Frequency Range	20 - 20000 Hz

DDJ-REV7

SCRATCH-STYLE 2-CHANNEL PROFESSIONAL DJ CONTROLLER FOR SERATO DJ PRO

Signal-to-Noise Ratio	110 dB (USB)- 95 dB (LINE)- 84 dB (PHONO)
Distortion	< 0.003 % (USB)- < 0.005 % (LINE)- < 0.017 % (PHONO)
Power Consumption	DC 24 V, 1 000 mA
2 channels	
2 Control Deck	
Trim knob	
Jog Wheel	175mm (Top plate); 207mm (Platter)
Color on jog display	
Beat FX, Echo, Time Sweep Echo, Ducking Echo, Echo Out, Fill Out, Spiral, Helix, Helix Out, Delay, Reverb, One-shot Spin, One-shot Brake, Duck Down, Flanger, Phaser, HP Filter, LP Filter, Trans, Roll, Fader Synth Sine, Fader Synth Saw, Fader Synth Square	
Sound Color FX	Filter, Noise, Pitch, Dub Echo, Wide Filter
Sampler	8slot x 4bank
Hot Cues	8
Pad Modes	Hot Cue, Roll, Saved Loop, Sampler, Pitch Play, Slicer Loop, Saved Flip, Scratch Bank
Manual Loop	
Auto Loop/Auto Beat Loop	
Slip Mode	
Talkover Function	
EQ Isolator	
Crossfader Feeling Adjust	
Crossfader Curve Adjust	
Inputs	2 PHONO/LINE (RCA), 2 MIC (XLR & 1/4 inch TRS Jack, 1/4 inch TRS Jack), 1 AUX (RCA)
Outputs	2 MASTER (XLR, RCA), 1 BOOTH (1/4 inch TRS Jack), 2 PHONES (1/4-inch stereo jack, 3.5-mm stereo mini-jack)