

**FLOOR-8ABK****8" FLOOR AND WALL MOUNT ACTIVE SUBWOOFER**

Increasingly, high sound quality is required even in previously not-so-performing sound systems. Bars, restaurants, pubs, stores today use sound-music, video games, home cinema, etc. - not only as a simple background, but as a real marketing tool, where sound quality is an important ingredient.

These subwoofers are meant to be placed in confined spaces, under sofas or against walls. But despite their slim look, housing volume and high-excursion woofers, deliver truly worthy bass of much larger systems.

The built-in Class-AB amplifier is stable, designed for long-term use and equipped with an auto-power function (to reduce power consumption), limiter, thermal and overload protection.. In addition to the stereo line input, there is also a stereo high-power (low-impedance) input that allows direct connection to amplifier outputs or speakers of an existing system, which is very practical if distances or other factors do not allow traditional connections to the mixer or link outputs of an amplifier.

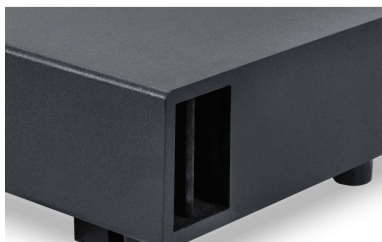
The subwoofers come with 4 rubber feet to help distance the speaker when placed with the woofer toward the floor and 2 brackets for suspended wall mounting to minimize the space and make the woofer fully protected as it faces the wall.



FLOOR-8ABK

# 8" FLOOR AND WALL MOUNT ACTIVE SUBWOOFER

## HIGHLIGHTS



### LITTLE SPACE BUT LOTS OF BASSES

HELVIA Floor subwoofers feature custom high-excursion woofers. The bass-reflex architecture cabinets are tuned to provide a linear and dynamic response even around 35Hz with power up to 100W. The slim design facilitates placement even in spaces that are not normally used, and allow you to enjoy your music and home cinema experiences like never before.

## DESIGNED TO SURPRISE

Floor Series woofers are designed to maintain maximum linearity in low-frequency excursion. The adjustable crossover from 40Hz to 150Hz and 0°/180° phase selector allow the subwoofer to be set to blend seamlessly with the rest of the sound system.



FLOOR-8ABK

# 8" FLOOR AND WALL MOUNT ACTIVE SUBWOOFER

## PRODUCT DETAILS

### KEY FEATURES

Bass-Reflex 8" Powered Subwoofer

Designed for Floor or Wall-Mount Use (Feet and Bracket included)

Class-AB Amplifiers with or 100W Power

Stereo Line Inputs and Stereo High-Level Inputs

Adjustable Crossover Frequency from 40Hz to 150Hz

Slim, stylish yet Rugged Housing with Black Finish

### SPECIFICATIONS

<b>Description</b>	8" Floor & Wall Active Subwoofer
<b>Speaker Type</b>	Bass-Reflex Subwoofer
<b>Frequency Response (-10 dB)</b>	From 40 Hz to 500Hz
<b>MAX SPL (1W@1m)</b>	81dB
<b>Crossover Frequency</b>	40Hz - 150Hz
<b>Crossover Filter Slope</b>	18dB/Octave
<b>Nominal Impedance</b>	4ohm
<b>Woofer Cone Diameter</b>	8"
<b>Amp Class</b>	Class-AB
<b>AES Power Rating</b>	50Watt
<b>Peak Power</b>	100Watt
<b>Protection</b>	Short Circuit, Overload, Thermal, Limiter
<b>Input Connections</b>	Stereo Line Inputs (RCA), Hi-Level Stereo Inputs (Spring Speaker Terminal)

## FLOOR-8ABK

**8" FLOOR AND WALL MOUNT ACTIVE SUBWOOFER**

<b>Power Connector</b>	VDE Socket with Fuse
<b>Level Control</b>	Sub Level control
<b>Phase Control</b>	Switch 0°-180°
<b>Auto Power</b>	2-way Selector (AUTO, ON)
<b>Power Requirement</b>	230Vac (+/- 10%) - 50Hz
<b>Max Power Consumption</b>	110Watt
<b>Housing Material</b>	MDF, Black Finish
<b>Housing Dimension (WxHxD)</b>	540 x 158 x 400 mm
<b>Subwoofer Weight</b>	10 kg
<b>Packing Size (WxHxD)</b>	635 x 455 x 200 mm
<b>Gross Weight</b>	11 kg