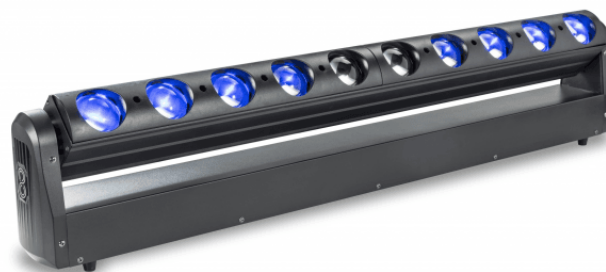


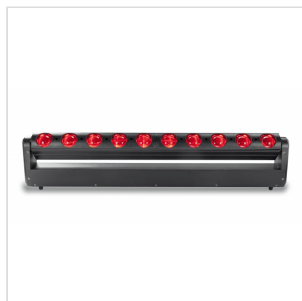
M-LINER 1040

10 X 40 W LED BEAM MOVING BAR WITH PIXEL CONTROL

The **M - Liner 1040** is an ultra high power LED based moving head beam bar with smart and compact stylish fireproof housing with a smooth, fast and quiet TILT movement. The beam angle is 2° for each LED with sharp beam effect. It features 10*40W 4-in-1 RGBW LED sources with pixel mapping capability which not only allows you to create an endless range of color variations, but also to use each LED of the array as a pixel in order to draw all kinds of graphic images that change dynamically both in shape and color. It provides variable speed shutter/strobe effect, virtual color macro effect, dynamic patterns, static patterns to its users for easy operation. It comes with kinds of DMX channel profiles. The M - Liner 1040 supports DMX, RDM (Remote Device Management).



The fixture's exterior housing is beautifully balanced basing on a modern design philosophy with supremely harmonious interior structure for remarkable control. The sculpted body of the **M - Liner 1040** achieves more than just a striking look. The 2*1/4 turn fastening omega clamps, available for vertical and horizontal plug-in, make installations fast and easy. It's applicable for large scale live concerts, TV productions, road shows, clubs, etc.



M-LINER 1040

10 X 40 W LED BEAM MOVING BAR WITH PIXEL CONTROL



M-LINER 1040

10 X 40 W LED BEAM MOVING BAR WITH PIXEL CONTROL

HIGHLIGHTS



PIXEL MAPPING CAPABILITY

**270° SMOOTH, FAST AND PRECISE
RESOLUTION FOR TILT MOVEMENT WITH
LOW NOISE OPERATION**



M-LINER 1040

10 X 40 W LED BEAM MOVING BAR WITH PIXEL CONTROL



2,° BEAM ANGLE

M-LINER 1040

10 X 40 W LED BEAM MOVING BAR WITH PIXEL CONTROL

PRODUCT DETAILS

KEY FEATURES

10 x 40W high efficiency 4-IN-1 RGBW LED Life Span 50000H

2,° Beam Angle

0-100% Smooth linear LED dimming with fine control

0-20Hz high speed strobe effect with variable speed

Sophisticated 4 colors RGBW mixed

Pixel mapping capability with each LEDs controllable individually

Sharp beam effect

Preset color macros and patterns with variable speed

Preset foreground color options for patterns

Flicker free operation for broadcast TV and FILM

TILT movement 230°(8/16 bit), photoelectric reset and automatic error correction

DMX512 with RDM / Master-Slave / Auto / Sound modes

High Efficient low noise self adjusting fan cooling system

SPECIFICATIONS

Lamp 10 x 40W high efficiency 4-IN-1 RGBW LED

LED life 50000 hours

Input voltage AC100-240V 50/60Hz

Power consumption 960W

M-LINER 1040

10 X 40 W LED BEAM MOVING BAR WITH PIXEL CONTROL

Control Mode	DMX512, Master/slave, Sound, Auto Mode, RDM
DMX Channel Modes	7/13/43 Channel
Beam angle	2°
Dimmer	0-100% Smooth linear LED with ?ne control
Focus	High resolution motorized
Scan	Smooth, fast and precise resolution for TILT movement 270° e 16Bit
Strobe	0-25T/sec high speed
Display	LED display with 4 control buttons
Colors	Sophisticated 4 colors RGBW mixed
Pixel mapping	available with each LEDs controllable individually
Preset	color macros, patterns, foreground and Background with variable speed
Lense	high efficiency acrylic
Housing	Flame-retardant plastic and Alluminium
Internal Running Temperature	0 ÷ 40°C
Dimensions (WxDxH)	1000(W) * 283.7(D) * 230(H)mm
Weight	13.6 kg
Package Dimensions (WxDxH)	1300(W) * 290(D) * 380 (H)mm
Package Weight	25.5 kg