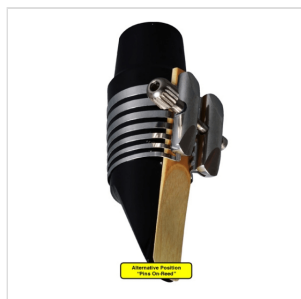
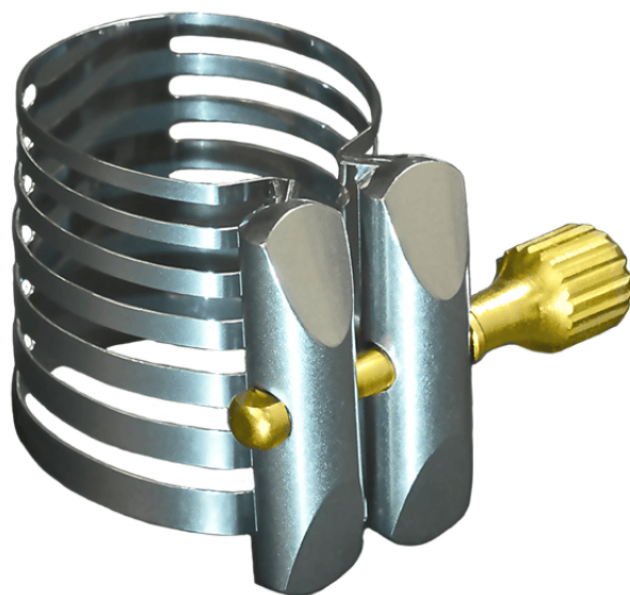


P-2R

## BB TENOR SAX SERIES PLATINUM LIGATURE (EBANITE/ABS MOUTHPIECE)

It all started in 1974, with the original Rovner Dark, an innovative design that changed the way woodwind players thought about ligatures. Today's Next Generation Rovner ligatures represent the next wave of Rovner innovation, featuring patented Mass-Loaded Technology™ and unique Resonating Ribs™. Rovner Products are technologically advanced to help you produce nothing less than musical magic! The incredible Platinum, Rovner's first all-metal ligature, is for any player seeking the ultimate in tonal purity and clarity. Initially preferred by classical players for its pleasing tonal characteristics, the Platinum is also enjoying a surge of interest from jazz players excited to explore its enhanced tonal spectrum. Form meets function, and any discerning player will delight in the Platinum's perfect blend of unparalleled performance and visual beauty. Of course, the Rovner ligature you choose will be based on your own set-up, playing style and preferred sound.



P-2R

# BB TENOR SAX SERIES PLATINUM LIGATURE (EBANITE/ABS MOUTHPIECE)

## PRODUCT DETAILS

### KEY FEATURES

Effortlessly played, with an incredible evenness of scale, smoothing out the difficult transitions between registers

Pure, dark tone. Superior control, for a secure, centered tone and flawless intonation

Bolsters and solidifies the lower register for both clarinets and saxophones.

Enhanced facility and response

Superior reed-gripping capabilities, especially advantageous for synthetic reeds

Durably constructed of highly-tempered, impeccably-polished, space-age metal alloy, the Platinum is as beautiful as a piece of fine jewelry

Suitable for ebanite/abs mouthpieces

Includes a Rovner cap

Bb Tenor Sax