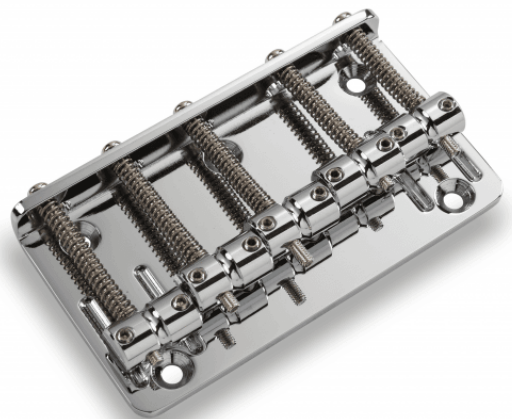


205B-5 C

BRIDGE FOR 5 STRINGS ELECTRIC BASS (CHROMED)

Bridge of superior quality, 18 mm string spacing, adjustable height, complete with matching fixing screws and Allen wrench.



205B-5 C

BRIDGE FOR 5 STRINGS ELECTRIC BASS (CHROMED)

PRODUCT DETAILS

KEY FEATURES

For 5 strings Electric Bass

Adjustable height

Brass saddle

Steel Plate

String spacing: 18 mm

Fixing screws and Allen wrench included

Finish: chrome

SPECIFICATIONS

Finishes	Chrome
-----------------	--------

String spacing	19 mm
-----------------------	-------