

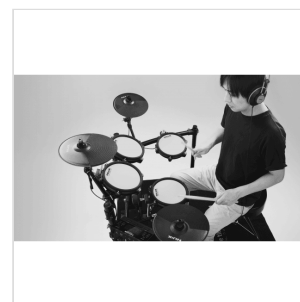
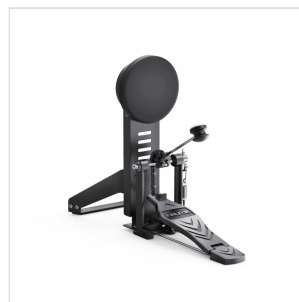
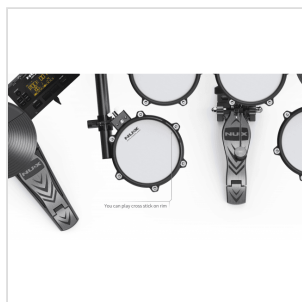
DM-210 ALL MESH DIGITAL DRUMKIT

Not having the proper tools to increase your skills ? Disturbing your neighbours? Not enough space for an acoustic drum? No problem!

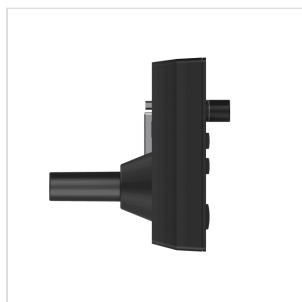
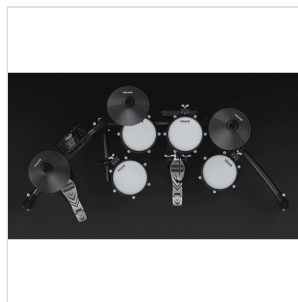
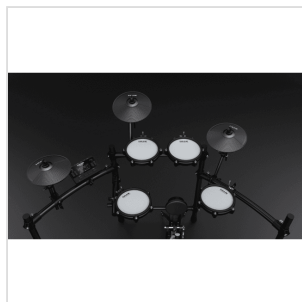
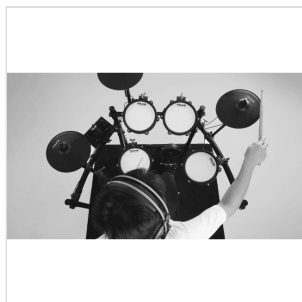
DM-210 is a new entry-level drum set, but it is equipped with all mesh drum pads and independent kick-drum especially designed to deliver a realistic drumming experience.

This drum set doesn't need much space - just 1.5 square meters - and is super light so anyone can move it. No matter what you play, what music style you love, DM-210 can fulfill your needs: the new sound library specifically designed for DM-210 users includes rock, metal, blues, pop, funk, jazz, pop drumkits and presets.

DM-210 has the coach function that can help you train your basic drumming skills, while if you feel ready, just press the REC button and start recording your beats!



DM-210
ALL MESH DIGITAL DRUMKIT



DM-210

ALL MESH DIGITAL DRUMKIT

HIGHLIGHTS



ALL MESH HEAD: PERFECT DRUMMING EXPERIENCE

You can easily customize the perfect feeling for your style by adjusting the tightness of the mesh heads.

RIM SHOT TIME!

You can play head or rim with your stick.



DM-210

ALL MESH DIGITAL DRUMKIT



INDEPENDENT KICK DRUM

The independent kick-drum is specially designed for DM-210 and gives you a realistic drumming experience.

NEW SOUND LIBRARY SPECIFICALLY DESIGNED FOR DM-210 USERS

Monday with metal, Tuesday with rock, Wednesday play some funk, Thursday practice the pop. Blues for Friday, and jazz for your weekend. No matter what you play, what music style you love, DM-210 can fulfill your music needs.



DM-210

ALL MESH DIGITAL DRUMKIT

PRODUCT DETAILS

KEY FEATURES

Real feel: you can easily customize the perfect feeling for your style by adjusting the tightness of the mesh heads.

Independent kick-drum especially designed for DM-210 delivering a realistic drumming experience

Super light and compact (only 1.5 square meter)

Wide sound library covering most of genres

Play, learn, record: following Coach Function and Demo songs you can improve your skills and then record your beats

SPECIFICATIONS

8" Tom (x3), 8" Snare, 10" Hi-hat, 10" Crash (x1), 10" Ride, Hi-hat control, Kick, Kick pedal, Module

Metronome, Coach, Tempo rate, Volume, EFX

MIDI data via USB port

Headphones, Output, Power In, USB Midi, AUX In, Crash2 Trigger In

All Mesh drum heads

Demo songs 10

FX Reverb

Presets 15

Power 9DC power supply center negative, 200mA

Peso 24 Kg. (45x95x32 cm)