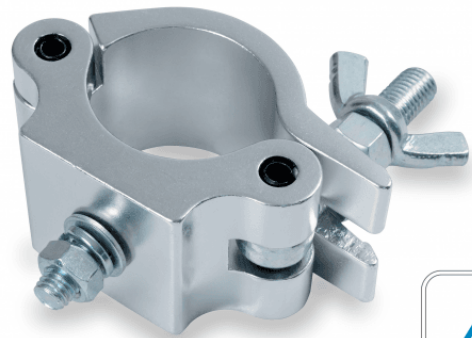


CLC-53500S

ALUMINIUM CLAMP 41-53 MM 500 KG

Clamp for trusses with sections between 41 and 53 mm.
Maximum load 500 kg.



CLC-53500S

ALUMINIUM CLAMP 41-53 MM 500 KG

PRODUCT DETAILS

KEY FEATURES

SPECIFICATIONS

Safe working load	500 kg
Fit tube Dimeter	Ø41-53 mm
Material	Aluminum
Surface Treatment	Polishing
Color	Aluminum
TUV Certified	Yes