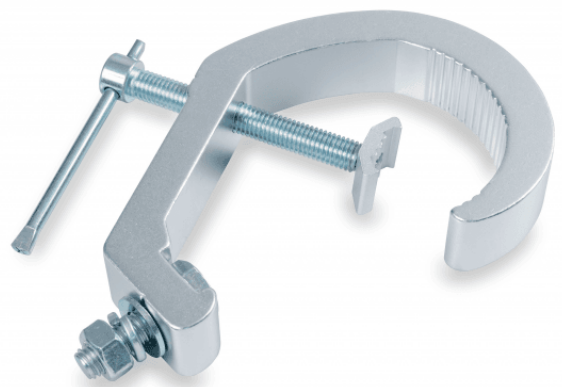


CLC-6570S

# ALUMINIUM CLAMP 30-65 MM 70 KG

Clamp for trusses with sections between 30 and 65 mm.  
Maximum load 70 kg.



CLC-6570S

# ALUMINIUM CLAMP 30-65 MM 70 KG

## PRODUCT DETAILS

### KEY FEATURES

### SPECIFICATIONS

Safe working load	70 kg
Fit tube Dimeter	Ø30-65 mm
Material	Aluminum
Surface Treatment	Polishing
Color	Aluminum