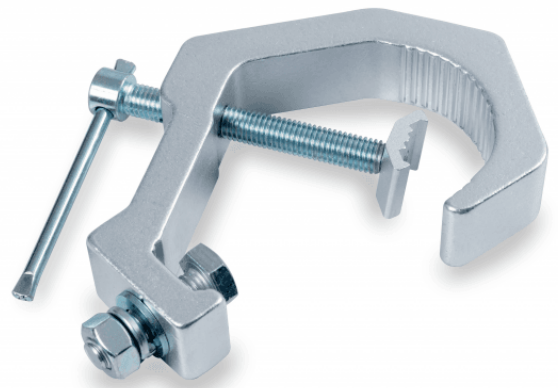


CLC-60150S

# ALUMINIUM CLAMP 20-60 MM 150 KG

Clamp for trusses with sections between 20 and 60 mm.  
Maximum load 150 kg



CLC-60150S

# ALUMINIUM CLAMP 20-60 MM 150 KG

## PRODUCT DETAILS

### KEY FEATURES

### SPECIFICATIONS

Safe working load	70 kg
Fit tube Dimeter	Ø20 - 60 mm
Material	Aluminum
Surface Treatment	Polishing
Color	Aluminum