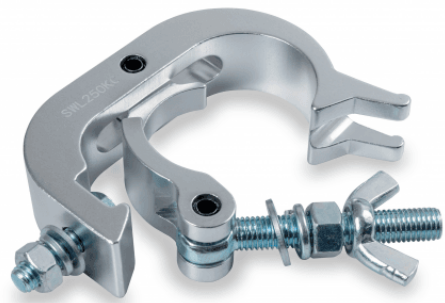


CLC-52250S

ALUMINIUM CLAMP 44-52 MM 250 KG

Clamp for trusses with sections between 44 and 52 mm.
Maximum load 250 kg.



CLC-52250S

ALUMINIUM CLAMP 44-52 MM 250 KG

PRODUCT DETAILS

KEY FEATURES

SPECIFICATIONS

| | |
|-------------------|-----------|
| Safe working load | 250 kg |
| Fit tube Dimeter | Ø44-52 mm |
| Material | Aluminum |
| Surface Treatment | Polishing |
| Color | Aluminum |
| TUV Certified | Yes |