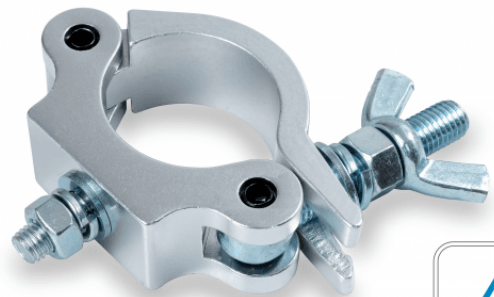


CLC-53200S

# ALUMINIUM CLAMP 41-53 MM 200 KG

Clamp for trusses with sections between 41 and 53 mm.  
Maximum load 200 kg.



CLC-53200S

# ALUMINIUM CLAMP 41-53 MM 200 KG

## PRODUCT DETAILS

### KEY FEATURES

### SPECIFICATIONS

Safe working load	200 kg
Fit tube Dimeter	Ø41-53 mm
Material	Aluminum
Surface Treatment	Polishing
Color	Aluminum
TUV Certified	Yes