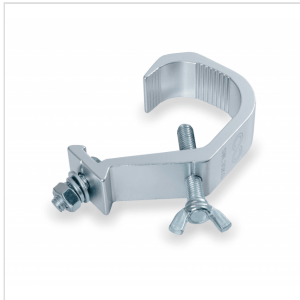
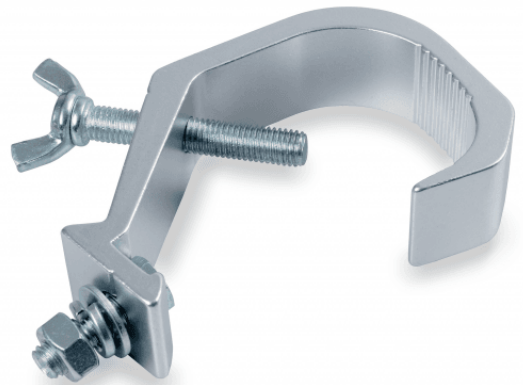


CLC-6030S

# ALUMINIUM CLAMP 30-60 MM 30 KG

Clamp for trusses with sections between 42 and 60 mm.  
Maximum load 100 kg.



CLC-6030S

# ALUMINIUM CLAMP 30-60 MM 30 KG

## PRODUCT DETAILS

### KEY FEATURES

### SPECIFICATIONS

Safe working load	100 kg
Fit tube Dimeter	Ø42-60 mm
Material	Aluminum
Surface Treatment	Polishing
Color	Aluminum